

# Product Profile

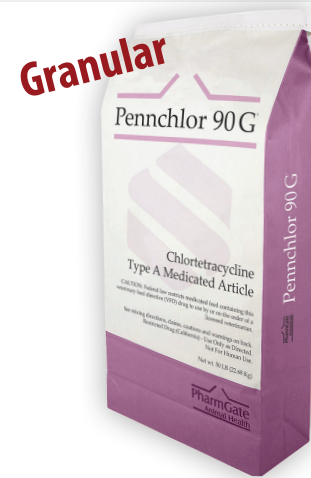
## Pennchlor 90G<sup>®</sup>



### Chlortetracycline Type A Medicated Article

#### Product Description

- **Antibacterial premix for oral administration in feed to chickens, turkeys, cattle, swine, and sheep**
- **Each pound of premix contains 90 grams of chlortetracycline activity**



#### Formulation

- Granular free-flowing feed medication.
- Ingredients: Chlortetracycline calcium complex, calcium carbonate, roughage products, mineral oil.

#### FDA Status

- **CAUTION:** Federal law restricts medicated feed containing this veterinary feed directive (VFD) drug to use by or on the order of a licensed veterinarian.
- Type A Medicated Article for use in the manufacture of medicated dry feeds (not for use in liquid feeds).
- Category I drug; does not require a feedmill license.

#### Withdrawal Period

- 0 days for livestock and turkeys.
- 24-hour withdrawal for chickens.
- Different withdrawal times may be required for certain export markets.

#### Indications (Partial List, See Back)

- Chickens: Control of infectious synovitis (*Mycoplasma synoviae*); control of chronic respiratory disease (CRD) and

air sac infection (*Mycoplasma gallisepticum*, *Escherichia coli*); reduction of mortality due to *E. coli*.

- Turkeys: Control of infectious synovitis (*M. synoviae*); control of hexamitiasis (*Hexamita meleagrides*); reduction of mortality due to paratyphoid (*Salmonella typhimurium*); control of complicating bacteria associated with bluecomb (transmissible enteritis, coronaviral enteritis).
- Cattle: For the reduction of the incidence of liver abscesses; treatment and control of bacterial pneumonia (*Pasteurella* spp.); treatment of bacterial enteritis (*E. coli*); control of active infection of anaplasmosis (*Anaplasma marginale*).
- Swine: Treatment of bacterial enteritis (*E. coli*, *Salmonella choleraesuis*) and bacterial pneumonia (*Pasteurella multocida*); control of leptospirosis (*Leptospira pomona*); reducing the incidence of jowl abscesses (Group E streptococci).

#### Packaging

- 50-lb, purple color-coded bags.

## Key Features

- **Convenient, cost-effective treatment option vs injectable therapy.**
- **Tried and trusted.**
- **Broad spectrum, effective against both Gram-positive and Gram-negative organisms that can cause respiratory, enteric, or reproductive diseases.**
- **Readily absorbed, providing effective blood and lung tissue concentrations.**
- **Granular formulation promotes consistent mixing with less dust.**
- **Wide safety margin.**
- **Versatile, with wide range of approved combinations.**
- **Color-coded bag for easy identification.**
- **High-quality manufacturing at US Pharmgate facilities according to FDA requirements.**

The labeling contains complete use information, including any cautions and warnings. Always read, understand and follow the labeling and use directions. See the reverse side for use directions and additional information.



**Pharmgate**  
ANIMAL HEALTH

1800 Sir Tyler Drive  
Wilmington, NC | 28405  
910.679.8364  
[Pharmgate.com](http://Pharmgate.com)

# Pennchlor 90G<sup>®</sup>

Chlortetracycline  
Type A Medicated Article

<b>Active Drug Ingredients:</b>		Chlortetracycline as Chlortetracycline Calcium Complex equivalent to 90 grams Chlortetracycline Hydrochloride/lb.			
<b>Ingredients:</b>		Chlortetracycline, Calcium Carbonate, Roughage Products and Mineral Oil.			
<b>For Use in the Manufacture of Medicated Feeds</b>					
<b>CAUTION: For use in Dry Feeds ONLY. NOT FOR USE IN LIQUID FEED SUPPLEMENTS</b>					
<b>Directions For Use</b>					
<b>Indications For Use</b>	Use Levels of Chlortetracycline	lbs. of Pennchlor 90 G <sup>®</sup> per ton	<b>Indications For Use</b>		
			Use Levels of Chlortetracycline		
			lbs. of Pennchlor 90 G <sup>®</sup> per ton		
<p><b>Chickens</b></p> <p><b>For Chickens:</b> Control of infectious synovitis caused by <i>Mycoplasma synoviae</i> susceptible to chlortetracycline. (Feed continuously for 7-14 days) <b>WARNING: DO NOT FEED TO CHICKENS PRODUCING EGGS FOR HUMAN CONSUMPTION. ZERO-DAY WITHDRAWAL PERIOD.</b></p> <p><b>For Chickens:</b> Control of chronic respiratory disease (CRD) and air sac infection caused by <i>Mycoplasma gallisepticum</i> and <i>Escherichia coli</i> susceptible to chlortetracycline. (Feed continuously for 7-14 days) <b>WARNING: DO NOT FEED TO CHICKENS PRODUCING EGGS FOR HUMAN CONSUMPTION. ZERO-DAY WITHDRAWAL PERIOD.</b></p> <p><b>For Chickens:</b> Reduction of mortality due to <i>Escherichia coli</i> infections susceptible to chlortetracycline. (Feed for 5 days) <b>WARNING: DO NOT FEED TO CHICKENS PRODUCING EGGS FOR HUMAN CONSUMPTION. WITHDRAW 24 HOURS PRIOR TO SLAUGHTER.</b></p>	100-200g/ton	1.11-2.22	<p><b>Swine</b></p> <p><b>For Swine:</b> Reducing the incidence of cervical lymphadenitis (jowl abscesses) caused by <i>Group E Streptococci</i> susceptible to chlortetracycline.</p> <p><b>For Breeding Swine:</b> Control of leptospirosis (reducing the instances of abortions and shedding of leptospirae) caused by <i>Leptospira pomona</i> susceptible to chlortetracycline. (Feed continuously for not more than 14 days)</p> <p><b>For Swine:</b> Treatment of bacterial enteritis caused by <i>Escherichia coli</i> and <i>Salmonella choleraesuis</i> and bacterial pneumonia caused by <i>Pasteurella multocida</i> susceptible to chlortetracycline. (Feed for not more than 14 days) <b>WARNING: ZERO-DAY WITHDRAWAL PERIOD.</b></p>	50-100g/ton	0.555-1.11
	200-400g/ton	2.22-4.44		400g/ton	4.44
	500g/ton	5.55		Feed approximately 400 g/t, varying with body weight and feed consumption to provide 10 mg/lb body weight/day	
<p><b>Turkeys</b></p> <p><b>For Turkeys:</b> Control of infectious synovitis caused by <i>Mycoplasma synoviae</i> susceptible to chlortetracycline. (Feed continuously for 7-14 days) <b>WARNING: DO NOT FEED TO TURKEYS PRODUCING EGGS FOR HUMAN CONSUMPTION. ZERO-DAY WITHDRAWAL PERIOD.</b></p> <p><b>For Turkeys:</b> Control of hexamitiasis caused by <i>Hexamita meleagridis</i> susceptible to chlortetracycline. (Feed continuously for 7-14 days) <b>WARNING: DO NOT FEED TO TURKEYS PRODUCING EGGS FOR HUMAN CONSUMPTION. ZERO-DAY WITHDRAWAL PERIOD.</b></p> <p><b>For Turkeys:</b> Turkey poults not over 4 weeks of age: Reduction of mortality due to paratyphoid caused by <i>Salmonella typhimurium</i> susceptible to chlortetracycline.</p> <p><b>For Turkeys:</b> Control of complicating bacterial organisms associated with bluecomb (transmissible enteritis, coronaviral enteritis) susceptible to chlortetracycline. (Feed continuously for 7-14 days) <b>WARNING: DO NOT FEED TO TURKEYS PRODUCING EGGS FOR HUMAN CONSUMPTION. ZERO-DAY WITHDRAWAL PERIOD.</b></p>	200g/ton	2.22	<p><b>CALVES, BEEF CATTLE, AND NONLACTATING DAIRY CATTLE</b> <b>WARNING: A WITHDRAWAL PERIOD HAS NOT BEEN ESTABLISHED FOR THIS PRODUCT IN PRE-RUMINATING CALVES. DO NOT USE IN CALVES TO BE PROCESSED FOR VEAL.</b></p> <p><b>For Growing Cattle (over 400 lbs.):</b> For the reduction of the incidence of liver abscesses. <b>WARNING: ZERO-DAY WITHDRAWAL PERIOD.</b></p> <p><b>For Beef Cattle:</b> For the control of bacterial pneumonia associated with shipping fever complex caused by <i>Pasteurella</i> spp. susceptible to chlortetracycline. <b>WARNING: ZERO-DAY WITHDRAWAL PERIOD.</b></p> <p><b>For Beef Cattle (under 700 lbs.):</b> Control of active infection of anaplasmosis caused by <i>Anaplasma marginale</i> susceptible to chlortetracycline. <b>WARNING: ZERO-DAY WITHDRAWAL PERIOD.</b></p> <p><b>For Beef Cattle (over 700 lbs.):</b> Control of active infection of anaplasmosis caused by <i>Anaplasma marginale</i> susceptible to chlortetracycline. <b>WARNING: ZERO-DAY WITHDRAWAL PERIOD.</b></p> <p><b>For Calves, Beef, and Nonlactating Dairy Cattle:</b> For treatment of bacterial enteritis caused by <i>Escherichia coli</i> and bacterial pneumonia caused by <i>Pasteurella multocida</i> susceptible to chlortetracycline. (Treat for not more than 5 days) <b>WARNING: ZERO-DAY WITHDRAWAL PERIOD.</b></p>	70 mg/head/day	
	400g/ton	4.44		350 mg/head/day	
	400g/ton	4.44		350 mg/head/day	
	25 mg/lb body weight/day			0.5 mg/lb body weight/day	
<p><b>Sheep</b></p> <p><b>For Breeding Sheep:</b> Reducing the incidence of (vibronic) abortion caused by <i>Campylobacter fetus</i> infection susceptible to chlortetracycline. <b>WARNING: ZERO-DAY WITHDRAWAL PERIOD.</b></p>	80 mg/head/day			10 mg/lb body weight/day	
<p>NADA 138-935 Approved by FDA Pennchlor 90 G<sup>®</sup> is a registered trademark of Pharmgate LLC</p>					

